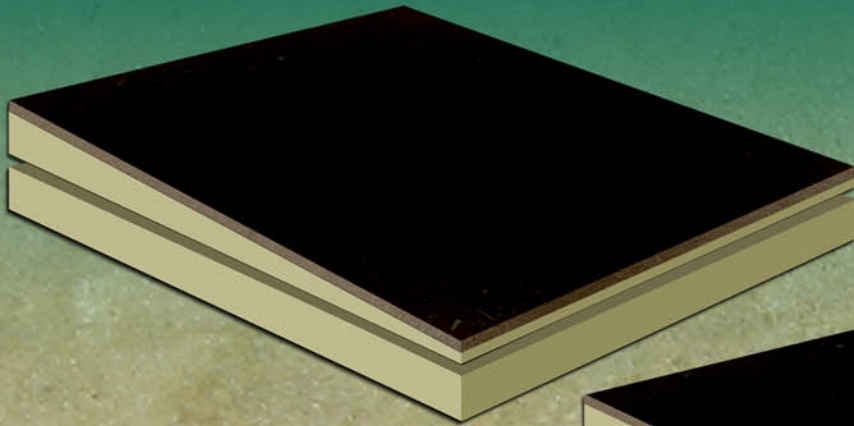


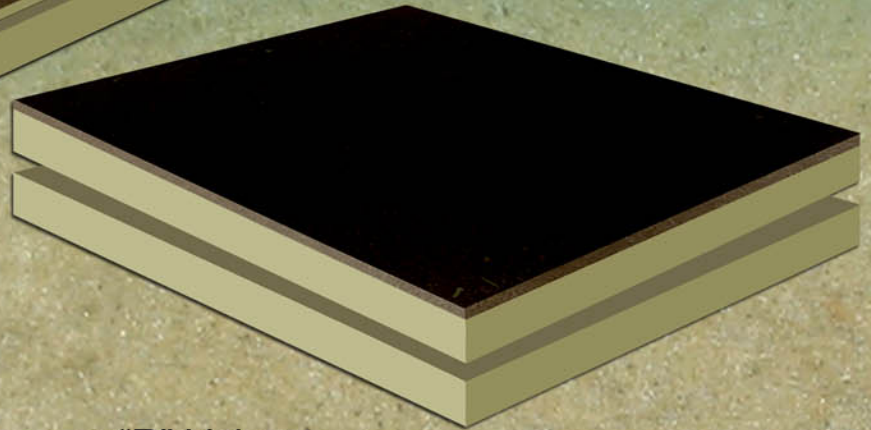
PROTECF **COMPOSITE SYSTEM**

For flat or low sloped conventional roof assemblies

ModulR insulation technology



*Available
Tapered
or Flat*



- *Labour saving installation*
- *Non-corrosive to steel decks*
- *Available in a variety of thicknesses or "R"-Values*
- *Factory laminated high natural fiber board to polyisocyanurate panel(s)*
- *Available in 4' x 4' shiplap edge sheets, flat and custom tapered systems*
- *CFC & HCFC free & does not contain or release ozone depleting chemicals*
- *Adhered with hot bitumen, cold applied adhesives or with mechanical fasteners*
- *For use cold applied or hot asphalt modified bitumen or built-up roof membrane systems in commercial or industrial roof applications*

ModulR**TS**^{INC}

Developing roofing solutions with everyone in mind

1-800-908-9899 / www.modulrts.com / contact.us@modulrts.com